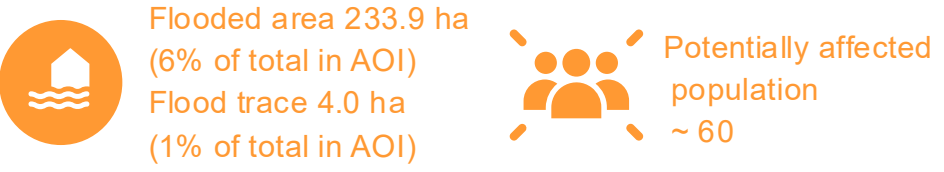
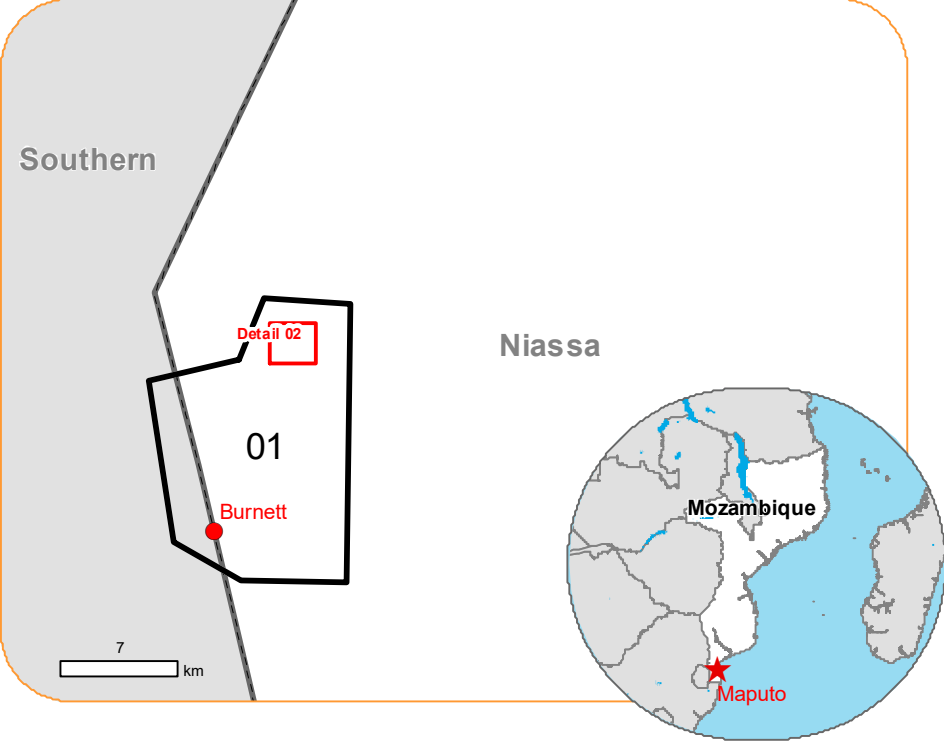


Situation as of 18/05/2023 07:55 UTC

Grading - Detail map 02



Affected Built-up and Transportations



**Crisis Information**

- Flooded Area
- Flood trace
- Built-Up Grading**
- Residential Building, Destroyed
- Residential Building, Damaged
- Residential Building, Possibly damaged
- Transportation Grading**
- Road, Damaged
- Road, Possibly damaged
- Main road, No visible damage
- Local road, No visible damage
- Track, No visible damage

**General Information**

- Area of Interest
- Placenames**
- Placename
- Hydrography**
- River
- Land Subject to Inundation
- River

All data displayed on the map(s), as well as the Land Use -Land Cover layer, is available in the Crisis Information Package and the Base Layer Package (for reference data). All products and data are also available for download on the activation webpage.

**Event:**  
Following Cyclone Freddy several communities in central and northern provinces of Mozambique have been totally isolated. In the framework of the emergency response, WFP is planning to provide food assistance to a community particularly impacted by floods located in an area that is being reported as being accessible only via motorbike. An informal refugee camp has been established in the area and WFP needs to access the status of the roads in the proximity of the camp and identify potential access routes for trucks.

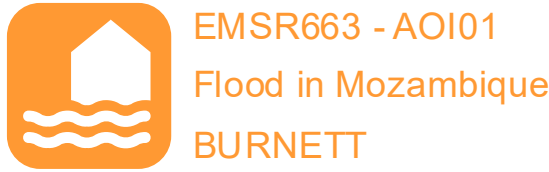
**Data sources and analysis:** Pre-event image: Pléiades-1A/B © CNES (2021), distributed by Airbus DS (acquired on 12/12/2023 at 08:11 UTC, resolution 0.5 m).  
Post-event image: SPOT7 © Airbus DS (2021), (acquired on 18/05/2023 at 07:55 UTC, resolution 0.5 m). This image is used as background image.  
All images are provided under COPERNICUS by the European Union and ESA, all rights reserved.

Base vector layers: OpenStreetMap © OpenStreetMap contributors (2023), Wikimapia.org, GeoNames 2015, Global Administrative Areas (2012), refined by the producer. Copernicus Global Land Service: Land Cover (2019).  
Inset maps: JRC 2013, Natural Earth 2012, GeoNames 2015.

Population data: GHS Population Grid © European Commission, 2022  
[https://ghsl.jrc.ec.europa.eu/ghs\\_pop2022.php](https://ghsl.jrc.ec.europa.eu/ghs_pop2022.php)

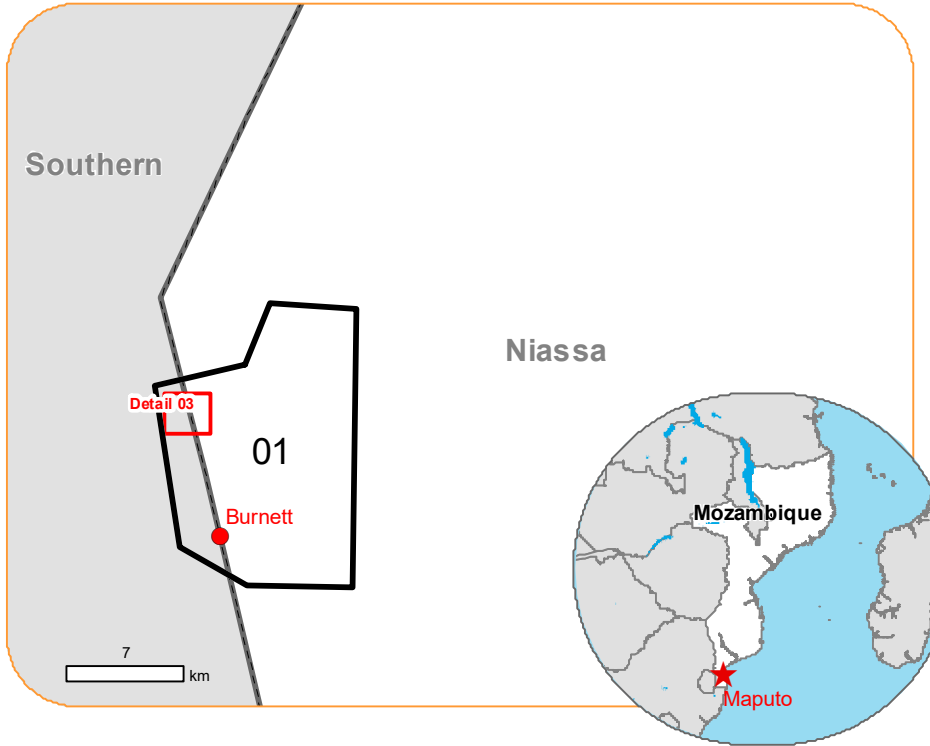
The thematic layer has been derived from post-event satellite image using a semi-automatic approach OR by means of visual interpretation.  
The scale of analysis is 1:10000. The estimated geometric accuracy (RMSE) is 2.5 m or better, from native positional accuracy of the background satellite image. The minimum mapping unit (MMU) is 100 sq. m.





Situation as of 18/05/2023 07:55 UTC

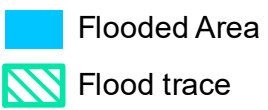
Grading - Detail map 03



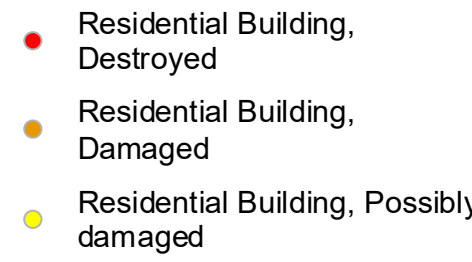
Affected Built-up and Transportations



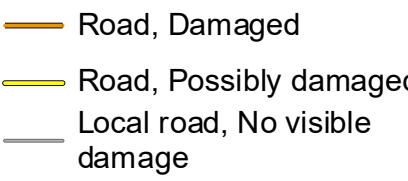
#### Crisis Information



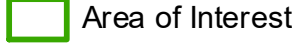
#### Built-Up Grading



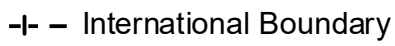
#### Transportation Grading



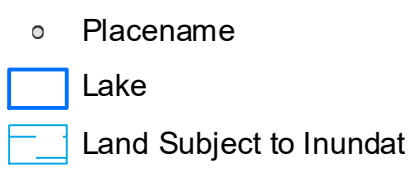
#### General Information



#### Administrative boundaries



#### Placenames



All data displayed on the map(s), as well as the Land Use -Land Cover layer, is available in the Crisis Information Package and the Base Layer Package (for reference data). All products and data are also available for download on the activation webpage.

#### Event:

Following Cyclone Freddy several communities in central and northern provinces of Mozambique have been totally isolated. In the framework of the emergency response, WFP is planning to provide food assistance to a community particularly impacted by floods located in an area that is being reported as being accessible only via motorbike. An informal refugee camp has been established in the area and WFP needs to access the status of the roads in the proximity of the camp and identify potential access routes for trucks.

**Data sources and analysis:** Pre-event image: Pléiades-1A/B © CNES (2021), distributed by Airbus DS (acquired on 12/12/2023 at 08:11 UTC, resolution 0.5 m).

Post-event image: SPOT7 © Airbus DS (2021), (acquired on 18/05/2023 at 07:55 UTC, resolution 0.5 m). This image is used as background image. All images are provided under COPERNICUS by the European Union and ESA, all rights reserved.

Base vector layers: OpenStreetMap © OpenStreetMap contributors (2023), Wikimapia.org, GeoNames 2015, Global Administrative Areas (2012), refined by the producer. Copernicus Global Land Service: Land Cover (2019). Inset maps: JRC 2013, Natural Earth 2012, GeoNames 2015.

Population data: GHS Population Grid © European Commission, 2022 [https://ghsl.jrc.ec.europa.eu/ghs\\_pop2022.php](https://ghsl.jrc.ec.europa.eu/ghs_pop2022.php)

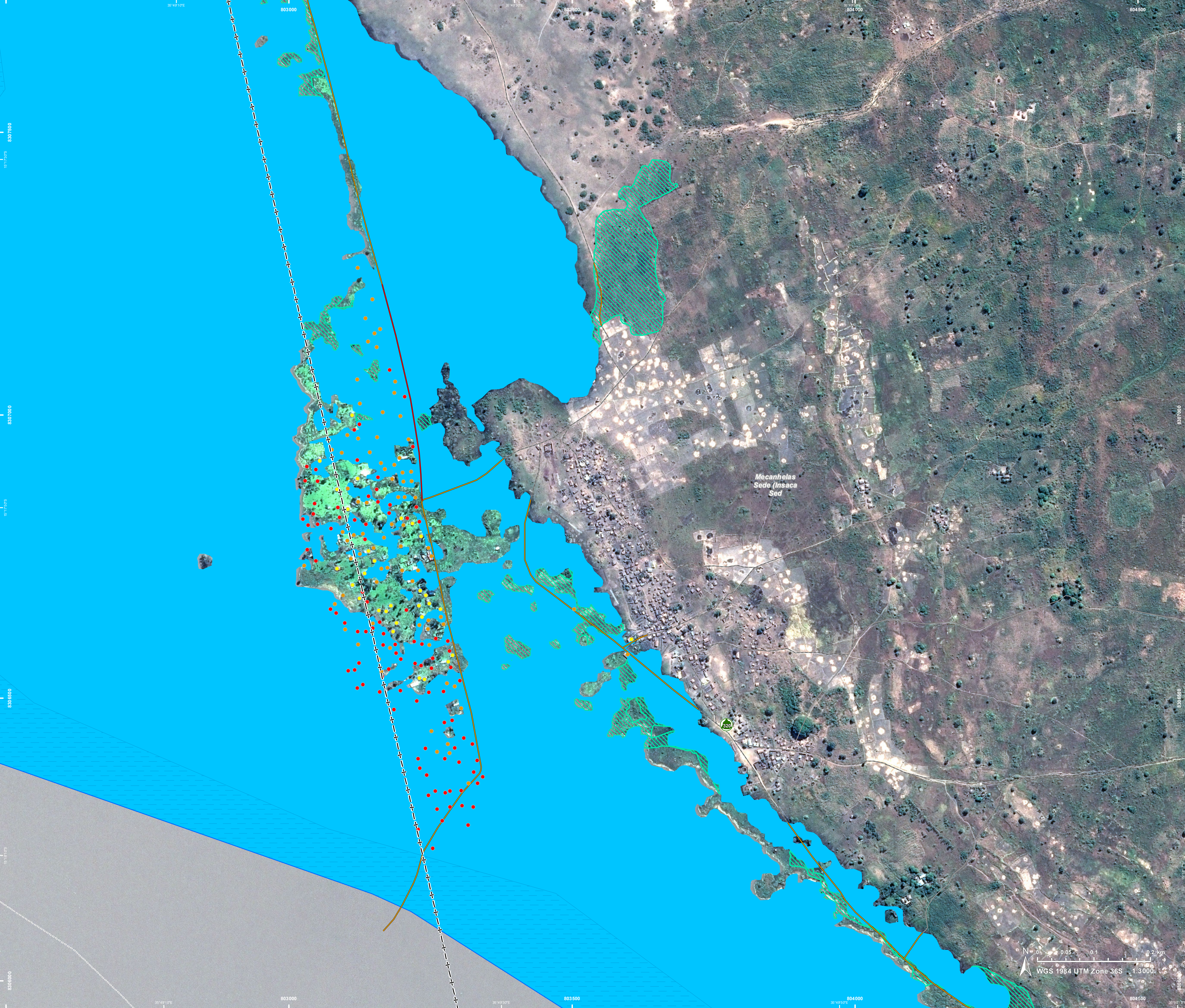
The thematic layer has been derived from post-event satellite image using a semi-automatic approach OR by means of visual interpretation. The scale of analysis is 1:10000. The estimated geometric accuracy (RMSE) is 2.5 m or better, from native positional accuracy of the background satellite image. The minimum mapping unit (MMU) is 100 sq. m.

Map produced by GAFAG released by e-GEOS on the 21/05/2023.

Details on this activation and service conditions available through the QR code or at the link: <https://emergency.copernicus.eu/EMSR663>

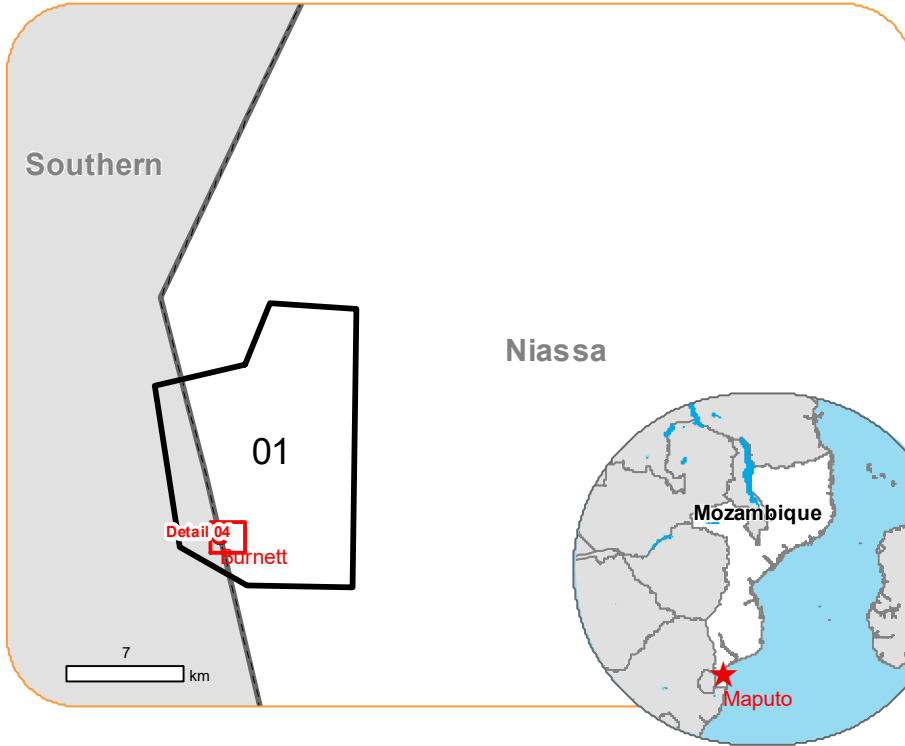






**EMSR663 - AOI01**  
**Flood in Mozambique**  
**BURNETT**

**Situation as of 18/05/2023 07:55 UTC**  
Grading - Detail map 04



**Flooded area 160.2 ha**  
(4% of total in AOI)  
**Flood trace 5.6 ha**  
(2% of total in AOI)

**Potentially affected population**  
~ 1100

**Affected Built-up and Transportations**

**Road**  
3.1 km  
(6% of total affected)

**Built-Up**  
209 No.  
(14% of total affected)

**Crisis Information**

IDP/Refugee camp

Flooded Area

Flood trace

**Built-Up Grading**

- Residential Building, Destroyed
- Residential Building, Damaged
- Residential Building, Possibly damaged

**Transportation Grading**

- Road, Destroyed
- Road, Damaged
- Local road, No visible damage
- Track, No visible damage

**General Information**

Area of Interest

**Administrative boundaries**

International Boundary

Province

**Placenames**

Placename

Lake

Land Subject to Inundation

All data displayed on the map(s), as well as the Land Use -Land Cover layer, is available in the Crisis Information Package and the Base Layer Package (for reference data).  
All products and data are also available for download on the activation webpage.

**Event:**

Following Cyclone Freddy several communities in central and northern provinces of Mozambique have been totally isolated. In the framework of the emergency response, WFP is planning to provide food assistance to a community particularly impacted by floods located in an area that is being reported as being accessible only via motorbike. An informal refugee camp has been established in the area and WFP needs to access the status of the roads in the proximity of the camp and identify potential access routes for trucks.

**Data sources and analysis:** Pre-event image: Pléiades-1A/B © CNES (2021), distributed by Airbus DS (acquired on 12/12/2023 at 08:11 UTC, resolution 0.5 m).

Post-event image: SPOT7 © Airbus DS (2021), (acquired on 18/05/2023 at 07:55 UTC, resolution 0.5 m). This image is used as background image. All images are provided under COPERNICUS by the European Union and ESA, all rights reserved.

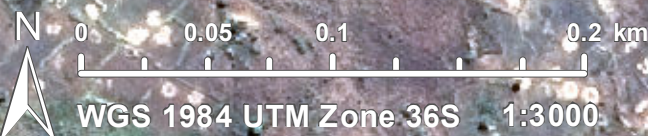
Base vector layers: OpenStreetMap © OpenStreetMap contributors (2023), Wikimapia.org, GeoNames 2015, Global Administrative Areas (2012), refined by the producer. Copernicus Global Land Service: Land Cover (2019). Inset maps: JRC 2013, Natural Earth 2012, GeoNames 2015.

Population data: GHS Population Grid © European Commission, 2022 [https://ghsl.jrc.ec.europa.eu/ghs\\_pop2022.php](https://ghsl.jrc.ec.europa.eu/ghs_pop2022.php)

The thematic layer has been derived from post-event satellite image using a semi-automatic approach OR by means of visual interpretation.  
The scale of analysis is 1:10000. The estimated geometric accuracy (RMSE) is 2.5 m or better, from native positional accuracy of the background satellite image. The minimum mapping unit (MMU) is 100 sq m.

Map produced by GAF AG released by e-GEOS on the 21/05/2023.

Details on this activation and service conditions available through the QR code or at the link:  
<https://emergency.copernicus.eu/EMSR663>





EMSR663 AOI: 01 Burnett Grading

Consequences within the AOI								
	Unit of measurement			Destroyed	Damaged	Possibly damaged*	Total affected**	Total in AOI
Flooded area		ha						4,191.9
Flood trace		ha						283.2
Ancillary Crisis Information	IDP/Refugee camp/Tents	No.						320
Estimated population	Number of inhabitants						~ 2,500	~ 100,000
Built-up	Residential Buildings	No.		395	1,073	70	1,538	9,751
	Reservoirs, silos and warehouses	No.		0	0	0	0	1
	School, university and research buildings	No.		0	0	0	0	23
	Hospital or institutional care buildings	No.		0	0	0	0	8
	Hotel buildings	No.		0	0	0	0	1
Transportation	Secondary Road	km		0.0	0.0	0.0	0.0	13.7
	Local Road	km		0.0	40.7	4.2	44.8	180.2
	Cart Track	km		3.1	5.2	0.0	8.3	211.3
	Trail	km		0.0	0.0	0.0	0.0	1.5
Facilities	Sport and recreation constructions	ha		0.0	0.0	0.0	0.0	2.0
			Very high damage	High damage	Moderate damage	Negligible to slight damage	Total affected**	Total in AOI
Land use	Shrub and/or herbaceous vegetation association	ha	NA	NA	NA	NA	2,879.8	8,187.4
	Inland wetlands	ha	NA	NA	NA	NA	806.3	1,347.6
	Heterogeneous agricultural areas	ha	NA	NA	NA	NA	456.1	5,514.3
	Other	ha	NA	NA	NA	NA	29.5	573.8
	Forests	ha	NA	NA	NA	NA	20.2	275.3
* Presence of damage proxies and proximity with destroyed/damaged asset								
** Sum of all damage classes								

**Disclaimer:**

Full disclaimer and other helpful information available in the online manual:

<https://emergency.copernicus.eu/mapping/ems/online-manual-rapid-mapping-products>

© European Union / Copernicus Emergency Management Service



PROGRAMME OF THE  
EUROPEAN UNION

